



Introducing
Oncolife
TRUSIGHT ONCOLOGY 500

| **Comprehensive Genomic Profiling Targeting 523 Genes** |

For assessment of all DNA and RNA variant types, plus MSI and TMB

Integrated workflow

Assay use DNA or RNA extracted from the same sample to detect cancer relevant genetic alterations



Analyse multiple Tumor types



Biomarkers across **523** Cancer Genes

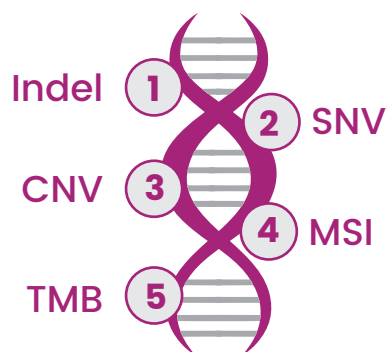


Genes **55** Fusions

Comprehensive Panel covering 11 Tumor types

Panel provides comprehensive coverage of biomarkers commonly mutated in numerous cancer types for single nucleotide variants (SNVs), insertions/deletions (indels), copy number variations (CNVs); and 55 genes for known and novel fusion and splice variants

DNA



RNA



One workflow
multiple sample
types

Assay use DNA or RNA extracted from the same sample to detect cancer relevant genetic alterations

High precision
reports

Detection of variants at low variant allele frequency with target enrichment chemistry provides high analytical specificity. The result is highly accurate variant calling performance with an analytical

Actionable clinical
results

Analysis on DRAGEN platform with proprietary algorithms provides actionable insights to help guide targetable treatment options

Sensitive detection
of CNVs

Analysis of 59 CNV associated genes and can call amplifications with a limit of detection at 2.2*fold-change

Oncolife TSO 500 combine comprehensive genomic content with sophisticated informatics algorithm to **provide accurate TMB estimation that is highly concordant with whole- exome studies.**

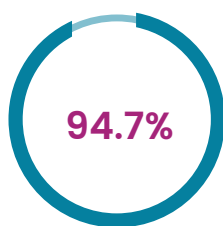
TMB analysis associated with improved survival in patients receiving immune check point inhibitors.



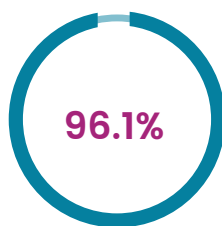
High TMB signifies high response to immunotherapy.

Oncolife TSO 500 interrogates 130 homopolymer MSI marker sites for precise and accurate quantitative score for MSI status.

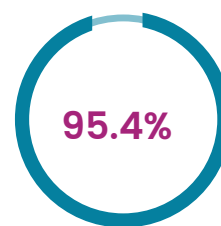
High concordance between Whole-exome sequencing (WES) and TruSight Oncology 500 for TMB classification at 10 mutations/Mb



Positive agreement



Negative agreement



Overall agreement

Based on TMB values from 108 FFPE tissue samples; percent agreement is shown for TMB-high or TMB-low classifications, with 10 mutations/Mb as the threshold value

Oncolife TSO 500

offering one work flow for multiple tumor type and emerging biomarkers



Comprehensive gene panel with MSI and TMB



Exon level CNV detection for BRCA 1 & 2 and HRR pathway genes



NTRK with MSI and TMB



Markers for immunotherapy

Robust detection of fusions and Splice variants

Table 3: RNA content in the TruSight Oncology 500 TruSight Oncology 500 High-Throughput panels

ABL1	AKT3	ALK	AR	AXL	BCL2	BRAF	BRCA1	BRCA2	CDK4	CSF1R
EGFR	EML4	ERBB2	ERG	ESR1	ETS1	ETV1	ETV4	ETV5	EWSR1	FGFR1
FGFR2	FGFR3	FGFR4	FLI1	FLT1	FLT3	JAK2	KDR	KIF5B	KIT	MET
MLL	MLLT3	MSH2	MYC	NOTCH1	NOTCH2	NOTCH3	NRG1	NTRK1	NTRK2	NTRK3
PAX3	PAX7	PDGFRA	PDGFRB	PIK3CA	PPARG	RAF1	RET	ROS1	RPS6KB1	TMPRSS2

NTRK1, NTRK2, NTRK3, (Pan-cancer) | MSI (Pan-cancer) | TMB (Pan-cancer)



Lung



Melanoma



Colorectal



Ovarian



Breast



Gastric



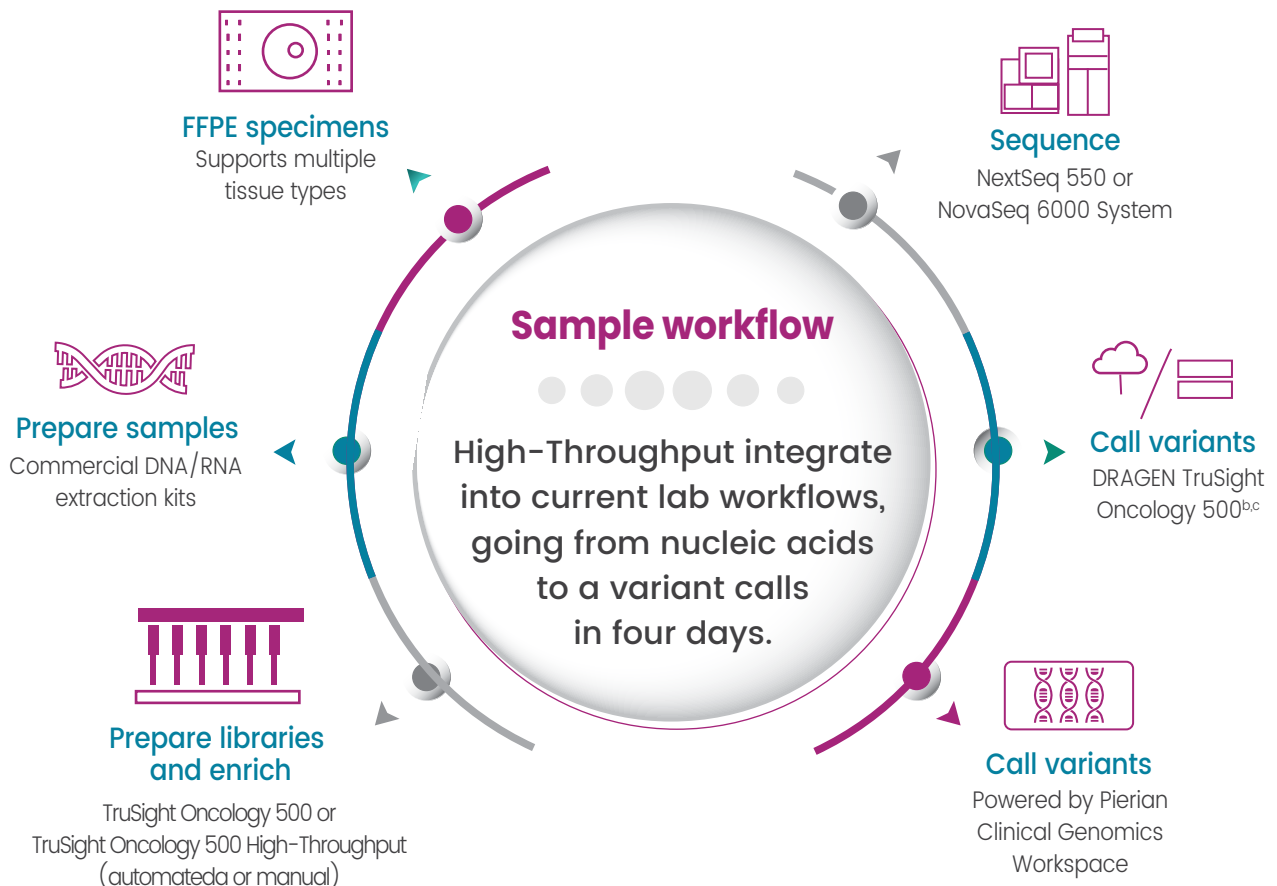
Prostate



CNS

ALK 1	ALK	ALK	ALK	ALK 1	BRAF	AR	ATRX
ALK	BRAF	BRAF	BRAF	ALK	EGFR	ATM	BRAF
ATM	BRCA1	BRCA1	BRCA1	BRAF	ERBB2	BRAF	BRIPI
BRAF	BRCA2	BRCA2	BRCA2	BRCA1	KIT	BRCA1	EGFR
BRCA1	EGFR	EGFR	EGFR	BRCA2	KRAS	BRCA2	H3F3A
BRCA	ERBB2	ERBB2	ERBB2	ERBB2	MET	BRIPI	HISTIH3B
EGFR	FGFR1	FGFR1	FOXL2	ERS1	NRG1	CDK12	IDH1
ERBB2	FGFR4	HRAS	ROSI	FGFR1	PIK3CA	CHEK1	IDH2
FGFR1	HRAS	MET	KRAS	FGFR2	PDGFRA	CHEK2	MYCN
FGFR3	KIT	NRG1	MET	NRG1	TP53	FANCL	PTCHI
KRAS	KRAS	PIK3CA	PDGFRA	PALB2		FGFR2	RELA
MAP2K1	MAP2K1	PMS2	ROSI	PIK3CA		FGFR3	TERT
MET	NRAS	POLE	TP53	PTEN		NBN	TP53
NRAS	NRG1	PTEN	HRD	ROSI		NRG1	
NRG1	PTEN	RET		TP53		PALB2	
NUTM1	ROSI	ROSI		HRD		PPP2R2A	
PIK3CA	TP53					PTEN	
PTEN						RAD51B	
RET						RAD51C	
ROSI						RAD51D	
TP53						RAD54L	
						RBI	
						ROSI	
						TP53	

Subset of genomic tumor profiling biomarkers for multiple cancer types—TruSight Oncology 500 and TruSight Oncology 500 High-Throughput include key guideline biomarkers, emerging biomarkers and pan-cancer biomarkers such as MSI, NTRK1-3, and TMB Content analysis, provided by Pierian, based on Knowledge Base v6.10 (February 1, 2022)



Test code	Test Name	Components	Specimen Type	Method	TAT
	Oncolife TSO 500				
ONCO0061	Oncolife - Focus gene panel	52 genes	FFPE Tissue/Paraffin block Histopathology report must accompany the specimen	NGS	4 weeks
ONCO0059	Oncolife - Comprehensive gene panel	150+ genes			
ONCO0064	Oncolife - Tumor mutation burden [TMB]	TMB			
ONCO0066	Oncolife Targeted Lung Panel Extended with PDL1 DAKO	Hotspot genes: ALK, BRAF, EGFR, ERBB2, KRAS, MAP2K1, MET, NRAS, PIK3CA, ROS1, TP53 Fusion genes: ALK, RET, ROS1, MET exon 14 skipping IHC: PDL1 22c3 Dako		NGS,IHC	14 Days
	Oncolife Targeted Lung Panel Extended with PDL1 SP263	Hotspot genes: ALK, BRAF, EGFR, ERBB2, KRAS, MAP2K1, MET, NRAS, PIK3CA, ROS1, TP53 Fusion genes: ALK, RET, ROS1, MET exon 14 skipping IHC: PDL1 SP263 Ventana			

Name of Salesperson: Contact:



support@mfine.co



www.mfine.co