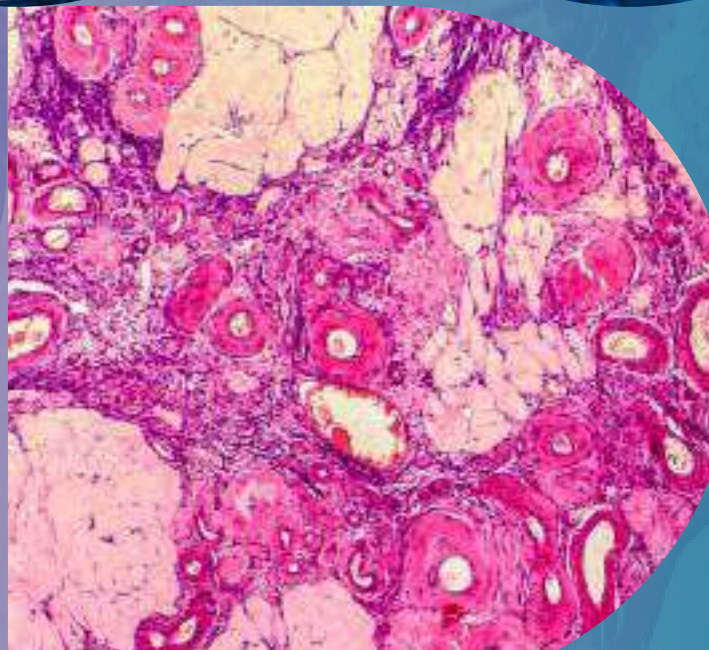
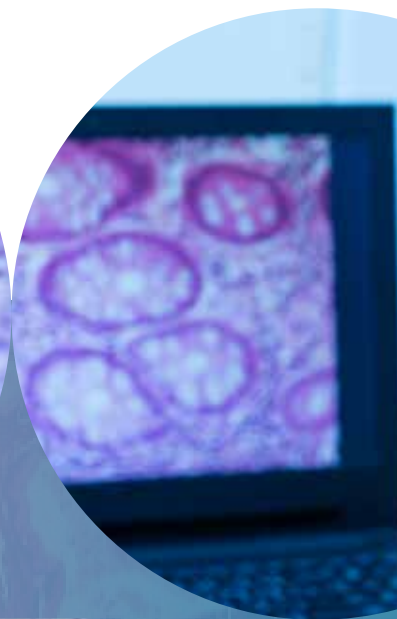
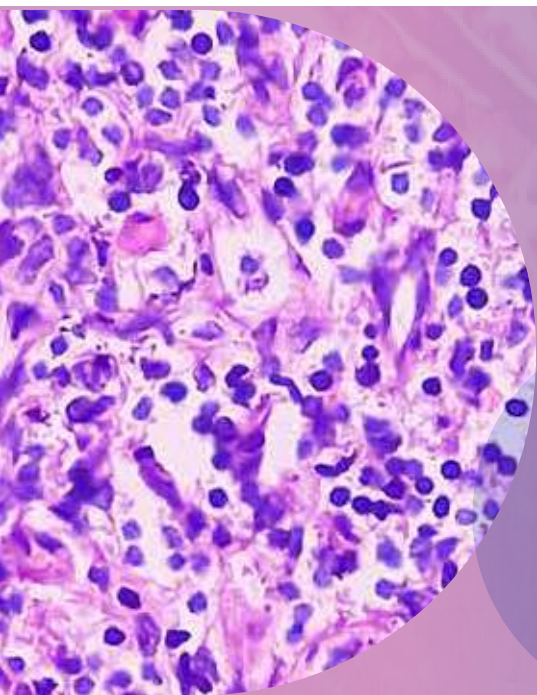


From Insight To **Accuracy**

Mfine Launching HistoCheck & HistoDetect

COMPREHENSIVE HISTOPATHOLOGY AND IHC TEST PANELS



WHY CHOOSE US?



Extensive IHC Expertise with over 130 IHC Markers



Rapid Turnaround Time



Trusted PDLI testing by the Ventana method



Customized Panel Designs



More than 1000 IHC tests conducted this year



Quality Assurance Measures



Fully Automated tissue processing with Leica Biosystems



Streamlined Report Generation



Experienced Histopath Technologists with Over 20 Years of Expertise



Advanced digital imagery of both positive and negative markers for a comprehensive final diagnosis panel



Precision Manual Staining with Modern Techniques (AFB, MTS, PAS) for Optimal Results

Histopathology: A Diagnostic Procedure

During a surgical process called a biopsy, a tissue is extracted and then immersed in a formalin solution. This is subsequently sent for microscopic examination to detect diseases, including cancer, various tissue damage, or other abnormalities.

WHY IS HISTOPATHOLOGICAL EXAMINATION OF TISSUE NECESSARY?

Histopathological examination offers superior diagnostic accuracy for diseases. It deeply examines the architecture of the tissue, uncovering vital information about its origin and appearance. Beyond just diagnosis, histopathology crucially offers insights into prognosis, such as the potential for local recurrence or metastasis.

Cytology Vs. Histopathology

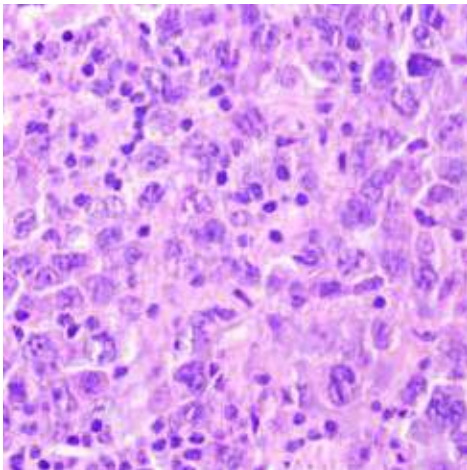
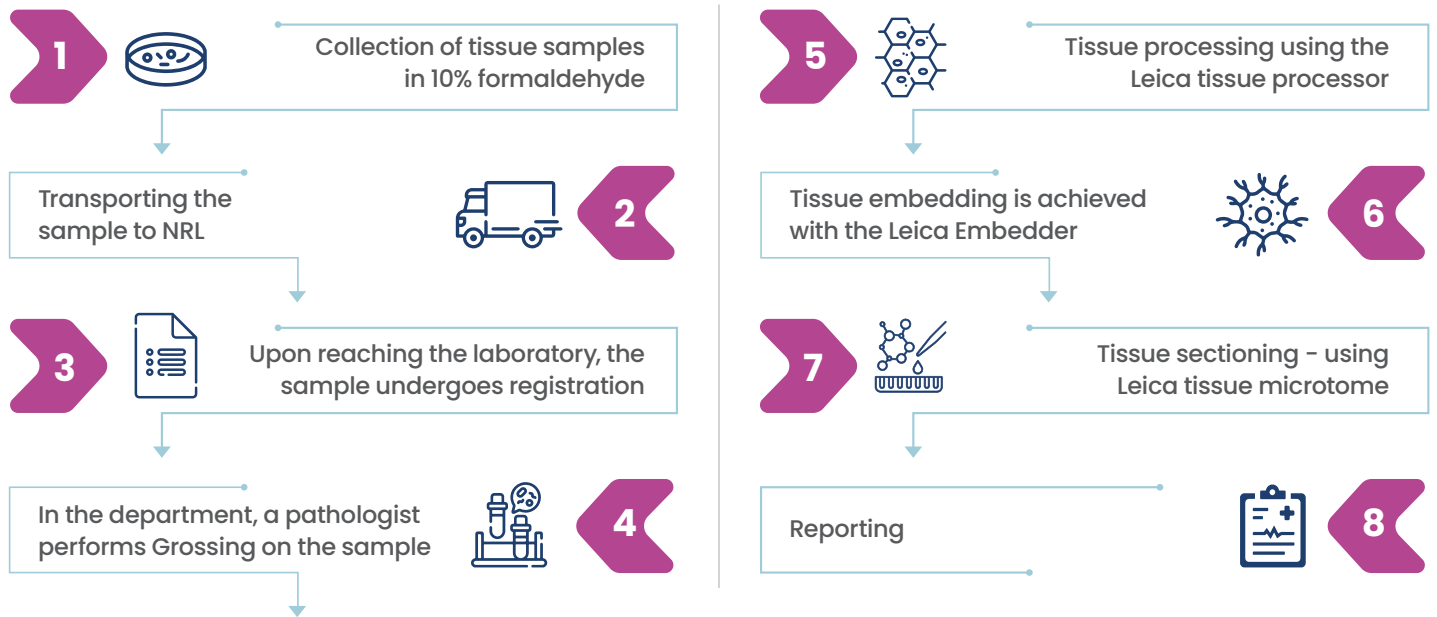
Feature	Cytology	Histopathology
Diagnostic Accuracy	Limited to cellular appearance; thus, less diagnostic than histopathology	Superior accuracy due to focus on tissue architecture and cellular morphology
Method	Examination of free cells or cell clusters	Examination of tissue sections
Interpretation	Primarily based on cellular morphology	Classification according to tissue origin and structure
Role in Cancer Diagnosis	Useful for initial assessments	Employs tissue origin and appearance for classification

UNRAVELING DISEASE MYSTERIES WITH MFINE'S HISTOCHECK & HISTODETECT

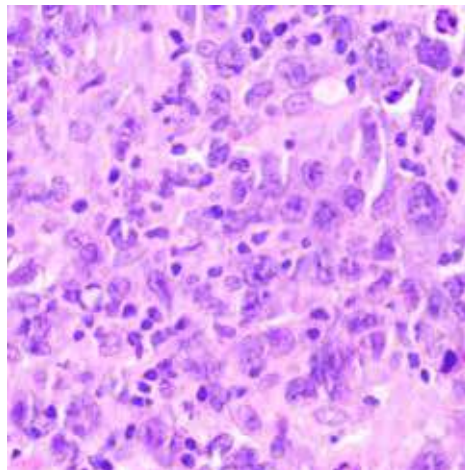
MFine's **HistoCheck** offers insights via microscopic examination of tissue samples. This method enables precise diagnosis and prognostic assessment for specific diseases. Moreover, it can detect pathogens like bacteria, fungi, and parasites. It even identifies the presence of heavy metals and toxins, emphasizing its pivotal role in comprehensive health evaluations.

Complementarily, Mfine's **HistoDetect** employs Immunohistochemistry (IHC). This enhances diagnostic accuracy by facilitating the identification of disease markers, such as those found in cancer, with unprecedented precision.

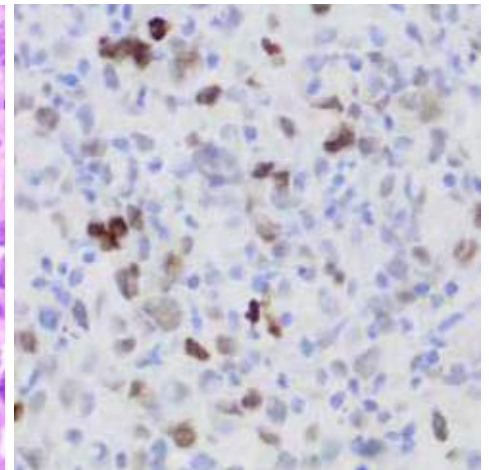
Sample Processing in Our Lab



40x, Large atypical lymphoid cells



40x, Mitotic figures



BCL6,40X

Cervical lymph node biopsy

Extensive Array of Histopathology and IHC Tests:

Test Code	Test Name	Sample Type	TAT
H0125	HistoCheck Small	Endometrium/ Cervix	3 Working Days
H0126	HistoCheck Medium	Endometrium + Cervix, Bilateral Fallopian tube, Ovarian Cyst, RPOC	5 Working Days
H0127	HistoCheck Large	Uterus/ Uterus with Ovary/ Uterus with Fallopian Tube	7 Working Days
H0128	HistoCheck Xtra Large	Uterus Ovary and Fallopian Tubes/ any tumor in Ovary/ Uterus/ FT	7 Working Days
H0129	HistoDetect Targeted (3 IHC Markers)	FFPE Tissue Block/Biopsy	3 Working Days
H0130	HistoDetect Focussed (5 IHC markers)	FFPE Tissue Block/Biopsy	5 Working Days
H0131	HistoDetect Comprehensive (Unlimited IHC markers upto diagnosis)	FFPE Tissue Block/Biopsy	7 Working Days

LIST OF IHC MARKER AVAILABLE

CD3	S 100	STAT-6	Calcitonin
C4d	AMACR	ROS-1	Prolactin
BKV	B-CATENIN	CD21	Growth hormone
P40	CA125	CD23	LH
NAPSIN A	CALPONIN - 1	CD31	FSH
ER	CD117 / C-KIT	CD43	TSH
PR	CD30 (KI-1 ANTIGEN)	CD45	ACTH
HER 2 NEU	CHROMOGRANIN A	CD68	IDHIR132H(H09)
KI 67 (MIB 1)	CYCLIN D1	CK5/6	ATRX(D5)
CEA	CYTOKERATIN - 20 (CK20)	Desmin	Beta HCG
PAN CK	CYTOKERATIN - 7 (CK7)	EBV-LMP1	p57
E-CADHERIN	D2-40	Factor 8	CD5
P63	EPITHELIAL MEMBRANE ANTIGEN (EMA)	GCDFP-15	CD7
PI6	GATA-3	GFAP	CD4
P 53	GLYPICAN 3	Hepar-1	CD8
PSA	HMB-45 (MELANOMA MARKER)	Kappa	Perforin
SMA	INHIBIN	Lambda	Granzyme B
WT1	Myogenin	CMV	HSV I&II
CD20	SATB-2	MPO	H pylori
CD34	SYNAPTOPHYSIN	PLAP	Mum -1
TTF-1	CD1a	FLI-1	PAX-8
MLH-1	Alk (D5F3)	CD2	SALL4
MSH2	CDK4	PD-L1 Clone 22C3	SF1
MSH-6	MDM2	PD-L1 Clone (SP142)	CD15
PMS2	INSM1	PD-L1 Clone (SP263)	CD38
Oct-02	BRAF V 600E	MyoD1	VIMENTIN
BCL-2	INI1	Androgen Receptor	ALK-1
BCL-6	NKX3.1	CD138	CDX2 (IHC)
CALRETENIN	NKX2.2	Olig2	PAX-5
CD10	Mammaglobin	SOX-10	
CD56	DOG-1	CA 19.9	
CD79A	PD-L1	CD99	

Meet the experts of our lab



MBBS (Thanjavur Medical college),
Senior Residency (AIIMS, New delhi),
MD Pathology (PGI, Chandigarh)

Dr. Mukin Kumar Sonai

Medical Director - Histopathology & IHC at MFine Diagnostics

- 5+ years of experience in Histopathology including Oncopathology, Cytology and immunology.
- Presented and published more than 8 research papers and case reports in peer reviewed journals.

Connect with us to

transform

Be our Partner in Growth and make India healthier.